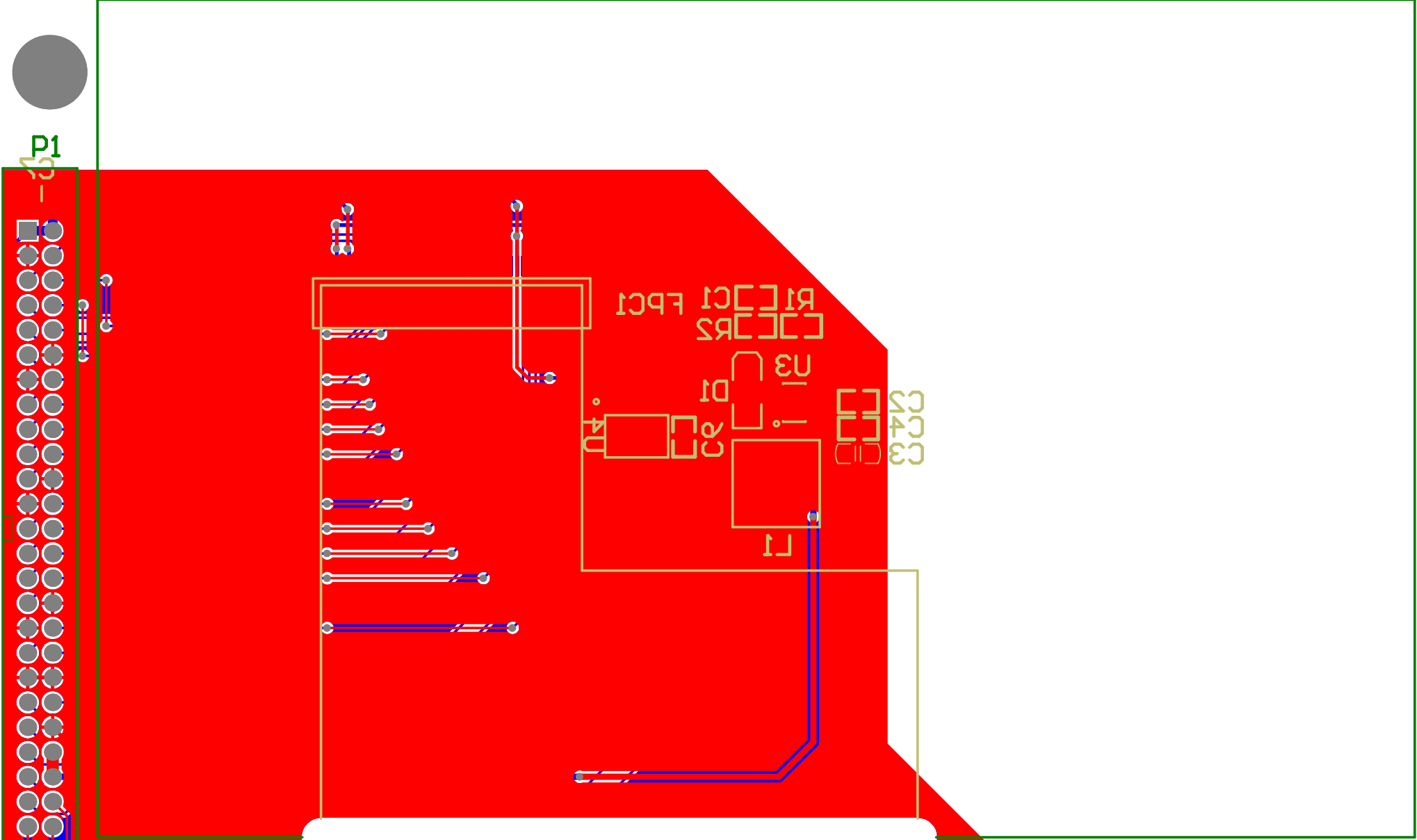


Title		
Size	Number	Revision
A4		
Date:	2011-12-28	Sheet of
File:	M:\PCB\ 1B 2.0\ 1B	.SchDrawn By:



P1

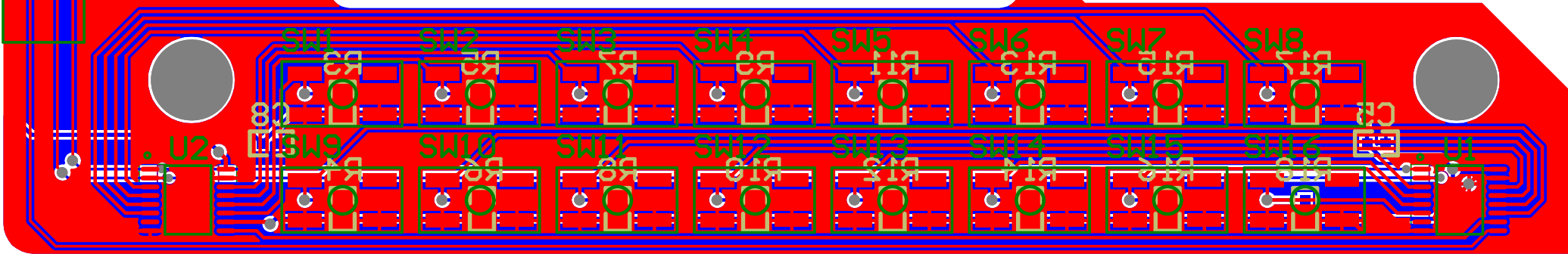
R1 R2 R3 R4 R5 R6 R7 R8 R9 R10 R11 R12 R13 R14 R15 R16 R17 R18 R19 R20 R21 R22 R23 R24 R25 R26 R27 R28 R29 R30 R31 R32 R33 R34 R35 R36 R37 R38 R39 R40 R41 R42 R43 R44 R45 R46 R47 R48 R49 R50 R51 R52 R53 R54 R55 R56 R57 R58 R59 R60 R61 R62 R63 R64 R65 R66 R67 R68 R69 R70 R71 R72 R73 R74 R75 R76 R77 R78 R79 R80 R81 R82 R83 R84 R85 R86 R87 R88 R89 R90 R91 R92 R93 R94 R95 R96 R97 R98 R99 R100

N3

D1

F1

C4 C3



SW1

SW2

SW3

SW4

SW5

SW6

SW7

SW8

SW9

SW10

SW11

SW12

SW13

SW14

SW15

SW16

U2

U1

Loongson

Comment	Description	Designator	Footprint	LibRef	Quantity
Cap Semi	Capacitor (Semiconductor SIM Model)	C1, C2, C4, C5, C6, C8	0603	Cap Semi	6
Cap Semi	Capacitor (Semiconductor SIM Model)	C3	C0805	Cap Semi	1
Cap Semi	Capacitor (Semiconductor SIM Model)	C7	6-0805_N	Cap Semi	1
1N5819	Schottky Diode	D1	3.2X1.6X1.1	D Schottky	1
FPC40		FPC1	FPC40	AT043TN24	1
电感 10uH		L1	MS0603	电感	1
NC	Socket	NC	4.3 寸 TFT_NEW	Socket	1
2.0mm 排针		P1	2.0mm 排针 2x2	2.0mm 排针	1
Res1	Resistor	R1, R2, R3, R4, R5, R6, R7, R8, R9, R10, R11, R12, R13, R14, R15, R16, R17, R18	0603	Res1	18
SW		SW1, SW2, SW3, SW4, SW5, SW6, SW7, SW8, SW9, SW10, SW11, SW12, SW13, SW14, SW15, SW16	SW	SW	16
DM74LS165N	8-Bit Parallel In/Serial Output Shift Register	U1, U2	SOT403-1_L	DM74LS165N	2
AIC1896		U3	SOT23-6	AIC1896	1
XPT2046		U4	SOT403-1_L	ADS7843	1